

Release Notes GC-CAM Edit v13.2

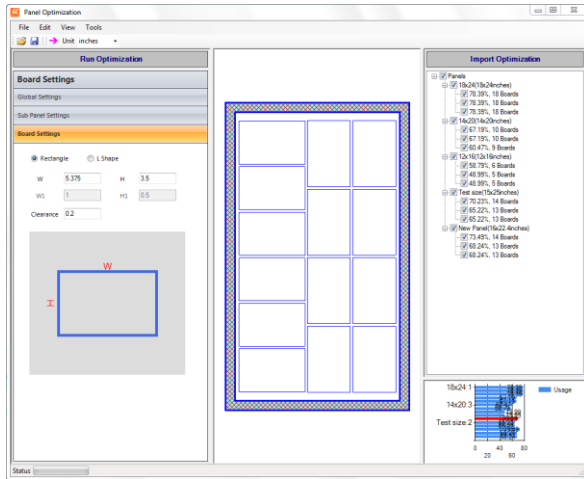
Table of Contents

- NEW FEATURES 2**
 - PANEL OPTIMIZATION 2
 - SUPPORT FOR AUTOCAD 2013 FORMAT 2
 - PLUGIN AUTOMATION 2
- IMPROVED FEATURES..... 2**
 - POLYGON DRAWING SPEED 2
 - SETTING DEFAULT NC DRILL IMPORT PARAMETERS 2
- 64BIT VERSION NOW AVAILABLE 3**
- ITEMS FIXED SINCE V13.1..... 3**

New Features

Panel Optimization

A new function to calculate panel utilization based on individual PCB size has been implemented. The function can be found under the Panel menu.



The function first searches for an existing physical layer defined as an Outline. If this layer is identified then the dimensions of this layer are used to pre-fill the PCB dimensions.

Once the dialog appears there are a number of available options.

Available Panel Sizes: Panels are shown in the upper right corner with the panel sizes to be used for optimization calculations having a checkbox next to them. Panels can be edited using Edit > Panels.

Board Settings: The type of board (rectangle or L-shaped) can be specified along with the relevant dimensions of the board. Also, the clearance between boards is defined in this area.

Sub-panel Settings: This area allows a sub panel to be created from the board information along with clearance distances between each board within the sub-panel.

Global Settings: If all boards and sub panels are required to be in the same orientation, that option can be set in this area. Also, if a sub-panel is to be panelized onto the panel, it is checked here.

The calculation is performed by clicking on the Run Optimization bar in the Upper Left. The results are calculated for each checked panel size and accessed by highlighting the appropriate panel in the right hand windows with the result shown in the central area. The

current highlighted panel size and configuration can also, if required be transferred back into the GWK file as an unassigned layer with the step and repeat pattern generated. A second unassigned layer is generated containing text describing the settings used.

Aligning the GWK outline layer with the image generated on the unassigned layer will allow the step and repeat pattern to be assigned to any data layer using the Apply Panel settings option in the right click menu for data layers.

Support for AutoCAD 2013 format

Import and export of AutoCAD v2013 is now supported.

Plugin Automation

A number of new functions have been added to the Plugin Automation. Details can be found within the programming environment but are focused on Layer, LayerGroups, Pad, Trace, and Part properties as well as functionality to convert drawn pads into flash pads.

Improved features

Polygon drawing Speed

An updated drawing algorithm has been implemented that results in significantly faster redrawing of polygons. Included in the last (13.1) release the function has been improved to cover Mix Color mode. Updates to take advantage of intrinsic functions has also allowed for further speeding up of polygon drawing in Normal mode.

Setting Default NC Drill Import parameters

Our automatic numbering format detection algorithm has had some issues identifying NC Drill formats when the number of drills in the file is less than 10 or so. An option has been added to set a default NC Drill format to help alleviate this issue. The settings can be found under the Tools > Customize > Settings dialog.

64bit Version now available

There is now a 64bit version available for download for any customer on a current support plan. Both the 32bit and the 64bit versions can be installed on the same computer. The 32bit version will install as v13.2.6 and the 64bit build will install as v13.2.8. The 32bit build will install into c:\Program Files (x86) by default and the 64bit build will install into c:\Program Files. The product names (for uninstalling) will be GC-PowerPlace 13.2.6 and GC-PowerPlace_x64 13.2.8 for example.

GWK files are compatible between 32bit and 64 bit versions but GWKs saved in this release will not read into earlier releases.

Items Fixed since v13.1

This list is customer reported issues fixed for this release.

#210 Trapezoiding algorithm resulted in an orphan string of text when exporting custom apertures containing internal polygon apertures. This issue has been fixed.

#208 Crash when printing polygons in certain instances fixed.

#206 DXF mitering problem fixed.

#205 Fixed issue with Layer Range and Distance Range error messages displayed during Panel Optimization.

#204 Modified the Custom Macro drawing algorithm to correctly display negative data within macros in relation to data already existing on the RS-274X layer. (also covers n5115 and n5587)

#200 The process of saving a custom aperture from within the Advanced Scan and Replace dialog has been fixed.

#194 Problem fixed with converting an aperture list using the Tool Table Assistant. The problem occurred when Fixed Width was chosen as the delimiter method and the DCode field then contained non-numerical characters after the D-Code number.

#193 Polygon information contained within the outline layer of an ODB++ file caused a mismatch in attributes. This resulted in incorrectly rotated components. Fixed.

#113 Fixed a DXF import crash related to memory management. The 64 bit version did not experience any issue with this dataset.